

Test-it™ PrCr

REF PRCR50

Proteinuria screening test as an aid in early detection of PREECLAMPSIA

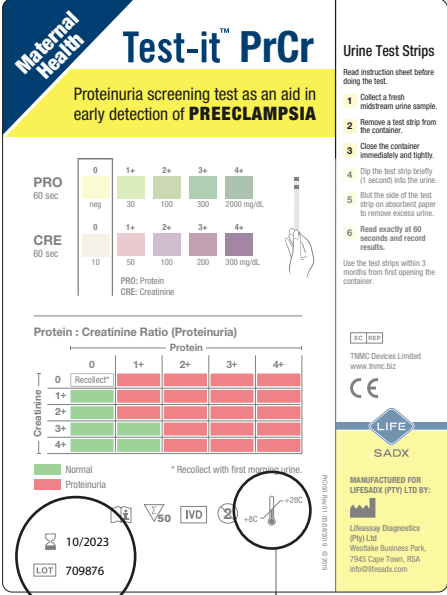
Preeclampsia (PE) is a serious disease associated with high blood pressure (hypertension) and protein in the urine (proteinuria) during pregnancy. It can affect women during the second half of pregnancy, and up to six weeks after delivery. PE risks include seizures or death for pregnant women, and premature birth or death for babies. PE is a leading cause of maternal and infant deaths and affects 10% of pregnancies worldwide. It is responsible for 1 in 10 maternal deaths in Africa and Asia. If diagnosed early, the life of the mother and baby can be saved with treatment.

Intended Use

Test-it PrCr urine test strip was developed to screen the urine of pregnant women for proteinuria, which is one of the early signs of PE. It therefore has special application in MATERNAL HEALTH. Each test strip includes 2 reagent pads – one for protein and one for creatinine. When the protein to creatinine ratio is determined, the screening of proteinuria becomes very accurate and reliable. The protein: creatinine ratio for proteinuria has been pre-determined at 0.3.

How to Use:

1 Check the colour label that the **expiry date** and maximum **storage temperature** of the test strips have not been exceeded. Do not use if product is beyond the expiry date, or if stored at wrong temperatures.



PRO
60 sec
neg 1+ 2+ 3+ 4+
30 100 300 2000 mg/dL

CRE
60 sec
10 50 100 200 300 mg/dL

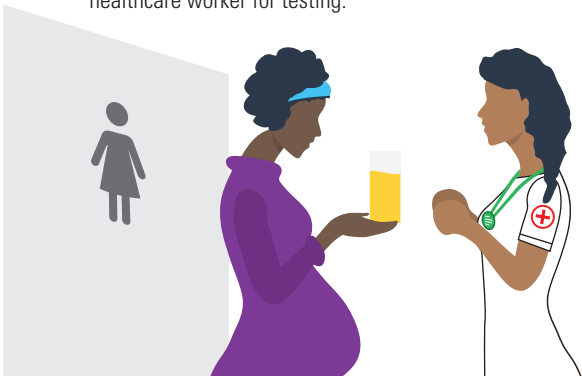
Protein : Creatinine Ratio (Proteinuria)		Protein				
		0	1+	2+	3+	4+
Creatinine	0	Recollect*				
	1+					
	2+					
	3+					
	4+					

* Recollect with first morning urine.

10/2023
LOT 709876


+28C
+8C

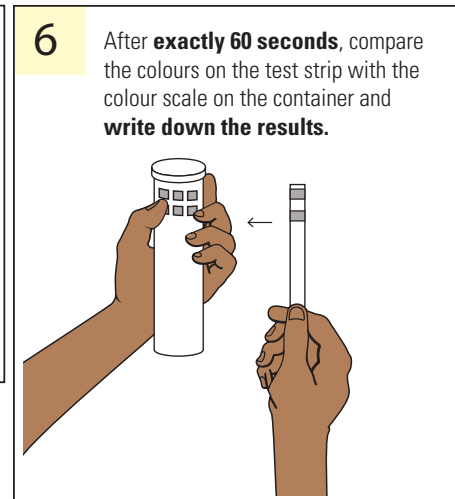
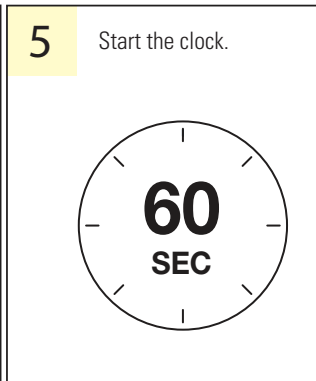
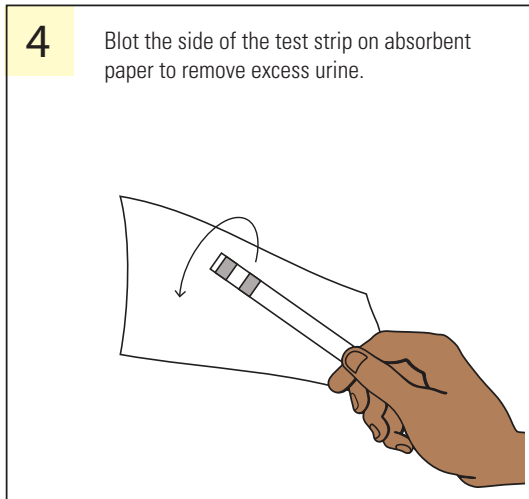
2 Ask the patient to collect **midstream** urine in a **clean container**, free of any disinfectant or soap residue. The urine sample is handed to a healthcare worker for testing.



3 Now, remove one test strip from the container. Do not touch the reagent areas. **Immediately close the container securely using the original cap.**

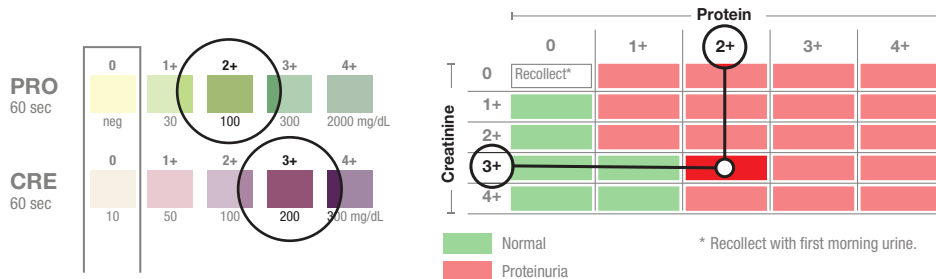
Briefly (1 second only), dip the test strip into the urine so that both reagent pads are wet, then remove.





Estimate **Proteinuria** as follows:

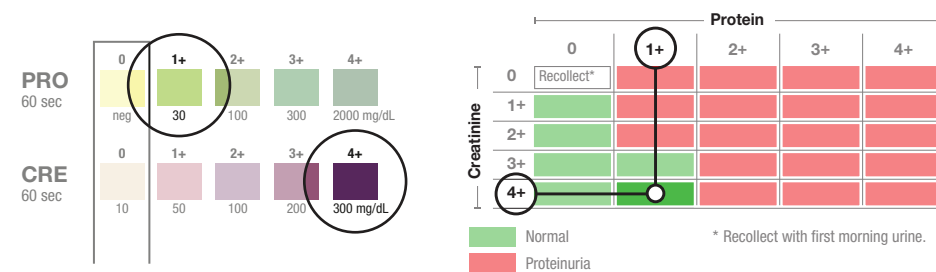
Protein 2+ Creatinine 3+ Example 1:



In the table to the left, find the **PROTEIN 2+** value on the top row, and then find the **CREATININE 3+** value on the left row as indicated.

Find the spot on the table where the **PROTEIN 2+** and the **CREATININE 3+** meet. In example 1 above, the 2 values meet on a **RED** colour block, which suggests **Proteinuria**.

Protein 1+ Creatinine 4+ Example 2:



In the table to the left, find the **PROTEIN 1+** value on the top row, and then find the **CREATININE 4+** value on the left row as indicated.

Find the spot on the table where the **PROTEIN 1+** and the **CREATININE 4+** meet. In example 2 above, the 2 values meet on a **GREEN** colour block, which suggests **Proteinuria** is NOT present (**Normal**).

Notes:

- This test is intended for screening of proteinuria during pregnancy. Always confirm results with a clinician before taking any action.
- Product performance data available from the manufacturer.
- Perform the test in good lighting conditions.
- Do not interpret results after 60 seconds as this may lead to false results.
- For single use only. Do not use more than once.
- Keep out of reach of children.
- Treat used strips as medical waste.

References:

- Gregory Zwisler, Arthur Lee, Emily Gerth-Guyette, Brandon T. Leader. A new, low-cost protein-to-creatinine strip dipstick to improve proteinuria screening for preeclampsia: Preeclampsia in low and middle income countries. *Pregnancy Hypertension: An International Journal of Women's Cardiovascular Health*, Vol 6 (3), July 2016, P.181
- J Eigbefoh, J Abebe, M Odike, P Isabu. Protein/Creatinine Ratio In Random Urine Specimens For Quantitation Of Proteinuria In Pre-Eclampsia. *The Internet Journal of Gynecology and Obstetrics*. 2006 Vol 8 (1).



Manufactured for Lifesadx (Pty) Ltd by:

Lifeassay Diagnostics (Pty) Ltd, Cape Town, RSA
info@lifesadx.com



TNMC Devices, Ltd
www.tnmc.biz